

# RZM 13-1250

## Technical Data

Please note coloured area!

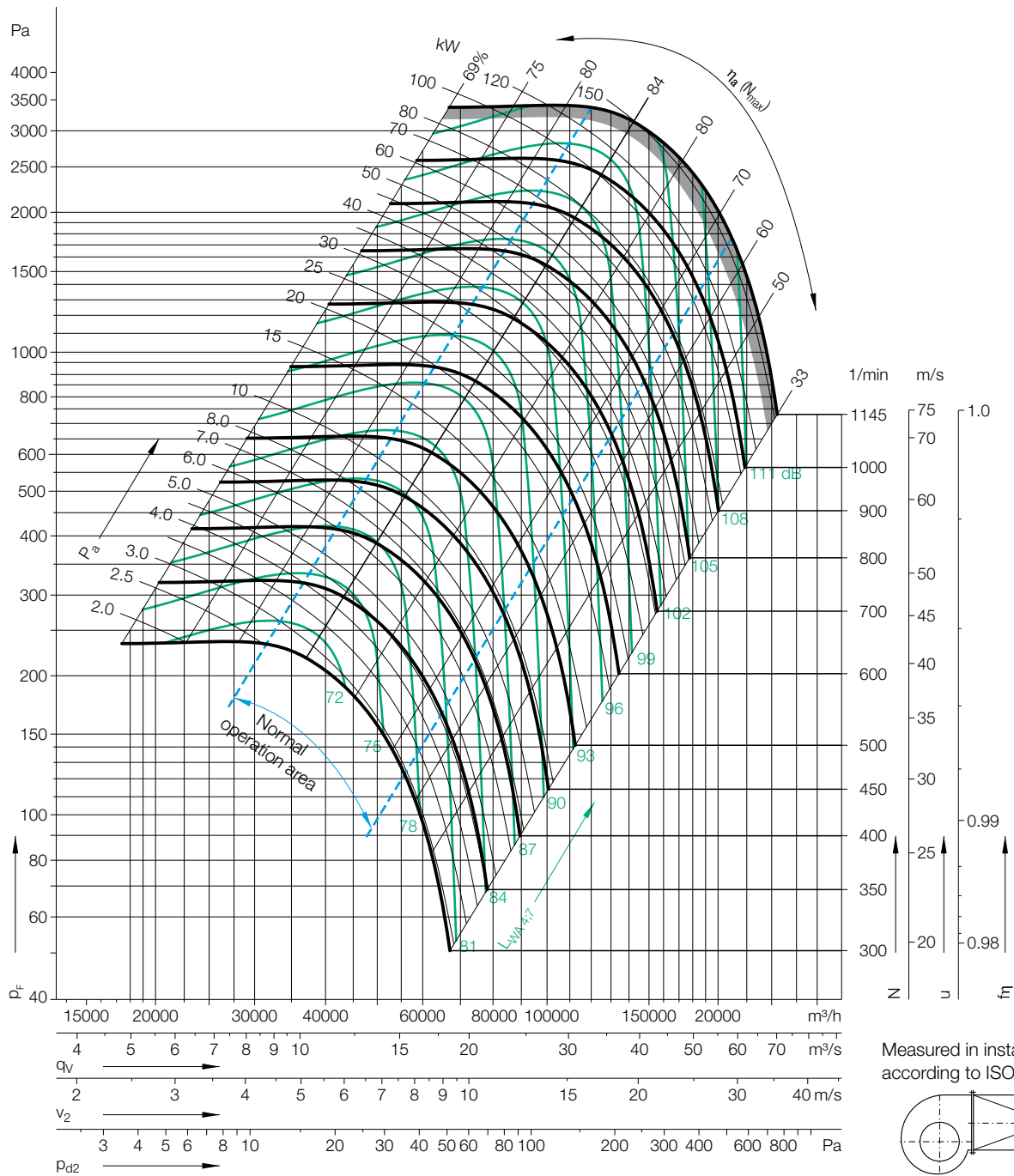
- all types suitable
- do not use in this area

### Impeller Data

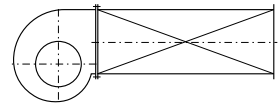
Impeller diameter	$D_r$	125 mm
Number of blades	$z$	12
Moment of Inertia	$J$	62.5 kgm <sup>2</sup>

### Impeller Data

Impeller weight	$m$	263 kg
Density of media	$\rho_1$	1.2 kg/m <sup>3</sup>



Measured in installation B according to ISO 5801:



## Determination of the Octave level

Relative sound power level for **inlet side**  $L_{Wrel7}$  at octave band correction factors  $f_c$ .

Speed	Duty point
≤611 1/min	≤0.8 $q_{Vopt}$
	>0.8-1.2 $q_{Vopt}$
	>1.2-1.6 $q_{Vopt}$
	>1.6 $q_{Vopt}$
Speed	Duty point
>611 1/min	≤0.8 $q_{Vopt}$
	>0.8-1.2 $q_{Vopt}$
	>1.2-1.6 $q_{Vopt}$
	>1.6 $q_{Vopt}$

63	125	250	500	1000	2000	4000	8000	Hz
0	3	1	-2	-6	-9	-13	-20	dB
-1	2	1	-2	-6	-9	-14	-21	dB
-2	1	1	-3	-5	-8	-15	-21	dB
-5	-3	-2	-3	-5	-7	-14	-21	dB
63	125	250	500	1000	2000	4000	8000	Hz
-1	-1	-3	-2	-7	-11	-16	-21	dB
-6	-4	-6	-2	-7	-10	-15	-21	dB
-10	-7	-8	-3	-6	-9	-14	-21	dB
-10	-7	-8	-3	-6	-8	-11	-20	dB

Relative sound power level for **discharge side**  $L_{Wrel4}$  at octave band correction factors  $f_c$ .

63	125	250	500	1000	2000	4000	8000	Hz
12	7	4	-3	-8	-14	-18	-26	dB
10	5	3	-3	-8	-14	-19	-28	dB
7	2	3	-3	-6	-13	-20	-28	dB
4	1	2	-3	-6	-12	-19	-28	dB
63	125	250	500	1000	2000	4000	8000	Hz
10	4	1	-1	-7	-13	-18	-25	dB
6	2	-2	-3	-6	-12	-15	-25	dB
2	-3	-3	-3	-6	-11	-15	-25	dB
1	-3	-5	-3	-6	-11	-13	-22	dB